

HV - Series

Multichannel high voltage sources

HV_User_Manual_3_54.doc
12. March 2024



Datasheet and User Manual

Rev. 3.54

Features:

- High Precision, Low-Noise DC voltage source, 1 to 16 channels
- Few Millisec. Response Time
- Plug-and-play USB-connectivity, RS-232, RS-485 optional
- Easy programming by LabVIEW, Python and others

Applications:

- Beam Line Electrodes
- Ion Traps
- Piezo Actuators

This Manual Applies to Model Numbers

HV 40-16, HV 50-16, HV 75-1p, HV 110-16p, HV 100-4, HV 100-8, HV 100-16, HV 200-2, HV 200-8,
HV 200-16, HV 400-8, HV400-16, HV 500-8, HV 500-12, HV 500-16, HV 1000-8, HV 2000-8

TABLE OF CONTENTS

1. Safety Hints	4
2. General Information and Overview.....	5
2.1 Purpose and Description of the Device.....	5
2.2 Functional Principle and Block Diagram.....	5
2.3. Device Variety and Ordering Options.....	6
3. Installation	7
3.1. Mechanical and Electrical Installation.....	7
3.2. Software Installation.....	8
3.2.1 USB-Driver.....	8
3.2.2 LabVIEW™ control program.....	10
4. Operation and Control Elements	12
4.1 Elements on the front plate.....	12
4.2 Control Software.....	13
4.3 Output Characteristics.....	16
4.4 Switching the device off	17
5. Using the Floating Ground Option.....	18
6. Analog read back option.....	20
7. Maintenance.....	20
8. Specifications.....	21
Appendix.....	26
User-Defined Remote-control and List of Commands	28
Ramping Option.....	31
Manual Revision History.....	31
Declaration of Conformity	32

1. Safety Hints

Read all installation, operation, and safety instructions	Prior to operation, thoroughly review all safety, installation, and operating instructions.
Choose appropriate mains voltage	Apply exclusively either 115V~ of 230V~ mains voltage, depending on device version . In case of installed 115V/230V mains selector option (rear side of device) ensure correct selector position. Never apply wrong mains voltage.
Do not operate above stated temperature and output current rating	The device may be damaged and a safe operation endangered, if operated at output currents above specified rating (see section 7 and corresponding notes). Further - more, if the internal temperature sensors indicate a value above 45°C, the device must not be operated.
Rear side switch turns device completely off	If the device is not in use for a longer time, it is recommended to turn the mains switch at rear side off.
This equipment must be connected to an earth safety ground	This product is grounded through the grounding conductor of the power cord. To avoid electrical hazard, the grounding conductor must be connected to protective earth ground.
Do not modify the unit	Do not make electrical or mechanical modifications.
Change cabling only when device is off	Changing the cabling, when voltages are present at the outputs can lead to formation of harmful sparks.
Do not operate in wet/damp conditions	To avoid electric shock hazard, do not operate this product in wet or damp conditions. Protect the device from humidity and direct water contact.
Beware of external magnetic fields	External magnetic fields can impair, damage or even destroy this device. A maximum external field strength of no more than $B = 5\text{mT}$ is admissible. Having placed the device at any time into an external magnetic of bigger $B = 5\text{mT}$ (regardless if power was on or off) can lead to severe overheating and hazard of fire .
Service is to be performed by qualified service persons only	All servicing on this equipment must be carried out by factory-qualified service personnel only.
Do not block chassis ventilation openings	Slots and openings in the chassis are provided for ventilation purposes to prevent overheating of the equipment and must not be restricted. All vents should continuously be cleared in order to prevent overheating. If mounted in a rack, please allow 2cm clearance at the top cover with respect to the next device above. If in doubt about of air ventilation, provide a software readout of the internal temperature sensor for regular inspection, e.g. every minute. A temperature over 45°C indicates inadequate air ventilation.
Operate carefully with respect to risk of electrical shock	This device can produce dangerous voltages at its output lines. The nominal output voltage will be even exceeded, in case an additional external voltage is applied to the “floating GND” input, or if an internal failure occurs. Greatest care must be taken to avoid unintentional touching of any output line or connection to devices which might be endangered by high voltages.
Routinely cleaning from dust	After long operation, or operation in a dusty environment it is strongly recommended to have the internal parts of the device cleaned by the manufacturer, or a qualified workshop to reduce the hazard of overheating and fire.
No outdoor operation	Outdoor operation of the device is not admissible.

2. General Information and Overview

2.1 Purpose and Description of the Device

Purpose of the HV series devices is the supply of stable DC voltages ($\pm 40V$ up to $\pm 500V$ or higher, model depending) for low-current applications like electrostatic lenses, ion traps or actuators. Unlike DC *power* supplies, the output currents are limited to small values, and the outputs are optimized for very high short and long term stability, low ripple, low noise and low temperature drift. The HV Series devices are housed in standard 19-inch rack-mount cases. User control of the device can be accomplished by PC control programs, utilizing a standard USB connection (USB 2.0 compatible), RS-232, RS-485 or other user-defined interfaces as hardware link. A LabVIEW™ control program is provided by the manufacturer for this purpose.

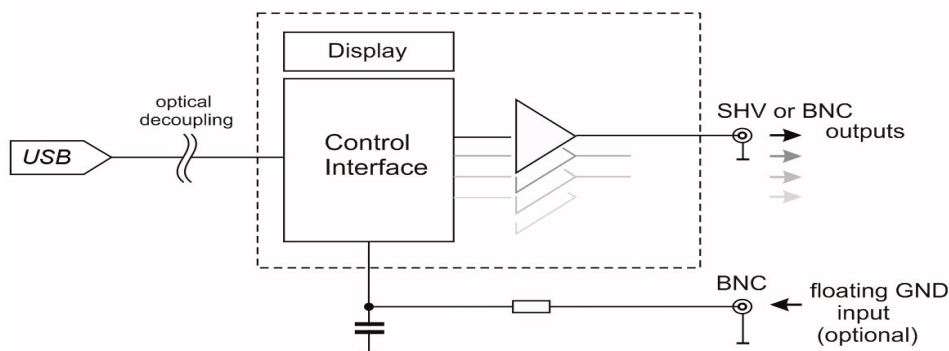


A unique feature is the combination of multiple channels and the continuous zero crossing capability, giving the user the possibility to sweep from positive (e.g. $+400V$) to negative (e.g. $-400V$) voltages continuously without switches and voltage breaks (this applies for the bipolar versions). The output stage of each channel features in most versions a true 4-quadrant sink/source capability and can take/deliver electrical currents both ways disregarding the output polarity.

2.2 Functional Principle and Block Diagram

The following picture displays a block diagram of the internal structure and illustrates the functional principle. The remote control interface receives commands through the USB connection (other interfaces optional). The received parameters set the voltage values for every channel. The outputs can deliver a current up to some small, internally limited values (approx. $\pm 50\mu A$, see section 4.3 and 7). If a channel voltage setting is changed, the internal regulation will try to establish the programmed voltage. If it does succeed, the corresponding indicator (LED) on the righthand side of the front plate will lighten up green, in other cases or in an overload event, it will become red. In case the overload has been removed, it will lighten up green again.

In case the option “floating GND” is installed, the device also provides the possibility to float the internal reference ground voltage, to which the voltage settings refer, with respect to the case- and protection GND. Applying an additional voltage to the “Offset GND” input will shift all output values with respect to the case ground. Any voltage on that input therefor places a common offset to the voltage values programmed by the user. The HV series devices do not provide a measurement of this external offset. It is up to the user to determine its value.



2.3. Device Variety and Ordering Options

The following devices are currently members of the HV series device family:

HV 50 (also available as $\pm 40V$ version HV 40)	HV 50-4	Output voltage -50V ... +50V 4 channels
	HV 50-8	Output voltage -50V ... +50V 8 channels
	HV 50-16	Output voltage -50V ... +50V 16 channels
HV 75	HV 75-1p	Output voltage 0V ... +75V 1 channel (high current)
HV 100	HV 100-4	Output voltage -100V ... +100V 4 channels
	HV 100-8	Output voltage -100V ... +100V 8 channels
	HV 100-16	Output voltage -100V ... +100V 16 channels
HV 110	HV 110-16p	Output voltage 0V ... +110V 16 channels
HV 200	HV 200-2	Output voltage -200V ... +200V 2 channels
	HV 200-8	Output voltage -200V ... +200V 8 channels
	HV 200-16	Output voltage -200V ... +200V 16 channels
HV 400	HV 400-4	Output voltage -400V ... +400V 4 channels
	HV 400-8	Output voltage -400V ... +400V 8 channels
	HV 400-16	Output voltage -400V ... +400V 16 channels
HV 500	HV 500-4	Output voltage -500V ... +500V 4 channels
	HV 500-8	Output voltage -500V ... +500V 8 channels
	HV 500-12	Output voltage -500V ... +500V 12 channels
HV 1000	HV 1000-8	Output voltages from -1kV to 0V, or from 0V to +1kV with switchable polarity (to be changed only with power being turned off)
Option Lemo Out	Provides 1/1000 - attenuated DC signal lines to monitor outgoing voltages (vs. case GND) on NIM -style Lemo sockets; output resistance approx 200kOhm.	
Option 115V/230V	provides the possibility to switch the required mains voltage between 115V~ and 230V~	
Option COM 485	RS-485 Communication Module	
Option COM 232	RS-232 Communication Module	

The devices with outputs up to 500V (vs. GND) are provided by default with BNC outputs at their rear side, the other variants with higher voltages, or versions with floating GND, which can give rise to voltages greater $\pm 500V$ at the outputs have SHV connectors. Voltages are either referenced to case ground, or if the option "Floating Ground Option" was ordered, which allows floating the reference GND up to a specified floating voltage.

3. Installation

3.1. Mechanical and Electrical Installation

Positioning: Provide sufficient air cooling of the device and locate in normal horizontal position to allow for defined air convection. Rack mounting into a standard 19" rack is as well possible as resting the device on a table. If mounted in a rack, please allow 2cm clearance at the top cover with respect to the next device above. All vents must permanently be cleared (fan inlet at rear side, air outlet at rear and top side), in order to prevent overheating. If in doubt about the sufficiency of air ventilation, provide a software readout of the internal temperature sensor for regular inspection, e.g. every 2 minutes. A temperature over 45°C indicates inadequate air ventilation. **In case a temperature above 45°C is indicated, the device must not be operated.**



Keep air vents always cleared to ensure sufficient ventilation

Beware of external magnetic fields:

Strong external magnetic fields can impair, damage or even destroy this device (e.g. proximity to a superconducting magnet). A maximum external field strength of no more than $B = 5\text{mT}$ is admissible. Not observing this important condition can lead to severe overheating of the device and increases the hazard of fire.

Connecting to mains power:

Connect the device to the mains power supply by using an appropriate power cord, being properly wired and providing a grounded outlet. The power cord must be suited with respect to possible load currents and be rated to 5A current. **Please observe country depending mains voltage ratings.**

Danger: Never apply wrong mains voltage.

In case of 115V/230V selector on rear side, choose correct mains voltage before connecting to mains supply.

Cabling of voltage outputs:

Always provide appropriate and safe cabling when connecting the device to other devices or vacuum/experimental setups. Cabling is preferred using high voltage cable with proper shielding. BNC or SHV connector cables are a suitable choice in order to ensure proper shielding against external noise pickup and in order to provide protective ground for safety reasons. Always be aware about the potential hazard of high electrical voltages to human beings and sensitive objects of all kind (see also safety hints in section 1).

Please note, that wiring may only be done when the device is turned off. Connecting a powered output to external circuitry can easily cause sparks and electrical discharges. The resulting overvoltages can severely and permanently damage the device itself and also external circuitry. After the device has been switched off allow at least 2 minutes to pass until cabling is changed.

USB connection:

Use a standard type-A-B connection cable (USB 2.0 standard) to connect the device to the control computer. After connecting to a PC under Windows XP, the "Found New Hardware Wizard" should open (see next section for detailed description), regardless if the HV-Series device is already switched on or not, since the corresponding receiver inside the HV-Series device is powered by the USB bus itself and therefore autonomous. Cable length can be prolonged using an appropriate USB hub or repeater.

3.2. Software installation

3.2.1 USB-Driver

The HV-Series devices use the USB bus for connecting to a control PC. Windows operating systems are assumed in the subsequent description. After proper cabling of the USB connection (see section before) the “Found New Hardware Wizard” under Windows may open up. Depending on the Windows version allow a few seconds to automatically identify the connected device and install drivers, or follow the described steps below. The automatic or manual installation will install the USB CDM drivers from FTDI, which is the manufacturer of the USB bus interface circuitry.

The supplied installation CD provides suitable drivers for operation under Windows XP, later Windows versions normally automatically install the driver, once the device is first time connected to a PC. Latest drivers, also for different other operating systems (Linux, Mac OS, other Windows versions) can be downloaded from <http://www.ftdichip.com/FTDrivers.htm>.

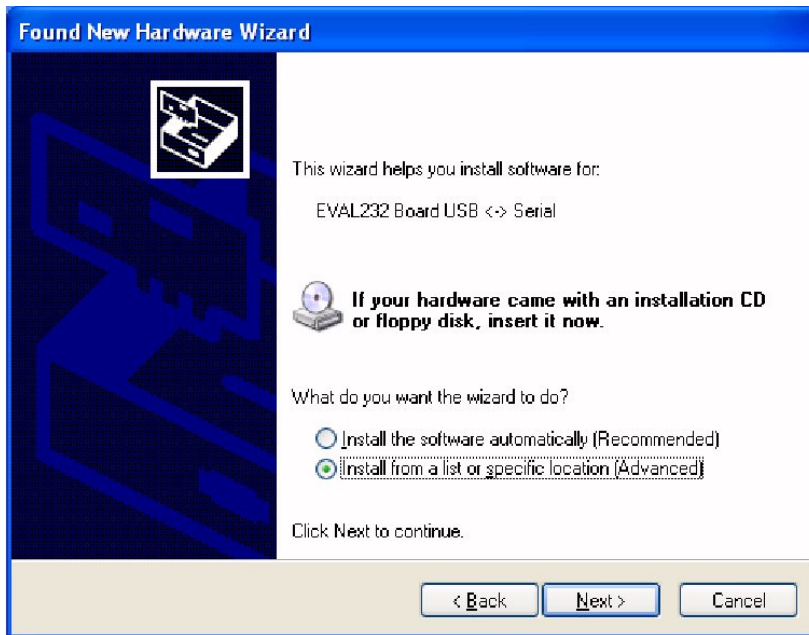
Execute the following steps in Windows XP after automatic start of the “Found New Hardware Wizard”. In later Windows versions, the procedure is either similar or will be executed automatically in the background (Windows10).

Under XP the following screen opens up,

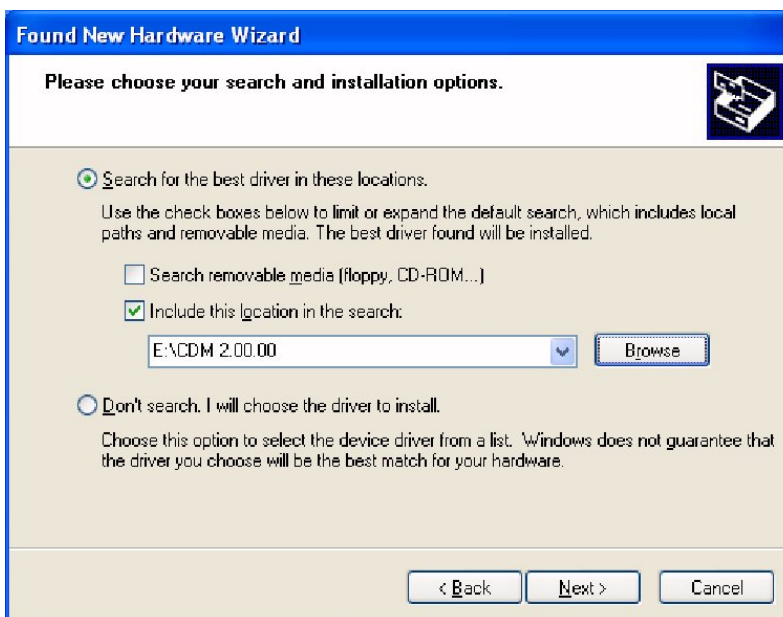


in which you activate the last button “**No, not this time**” and continue with “**Next**”.

In the following window choose “Install from a list or specific location” => “**Next**”



And afterwards you choose “**Search for the best driver in these locations**” and “**Include this location in the search**”. Browse now to the Installation CD and select the appropriate path with the USB drivers.



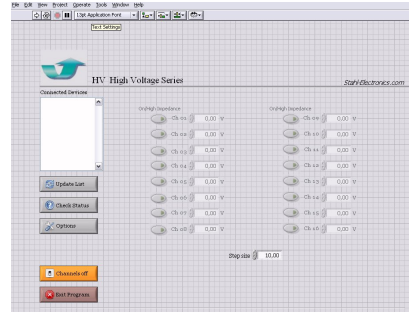
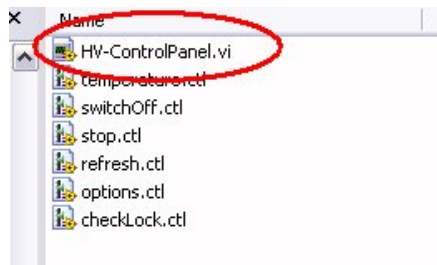
Click “**OK**” and “**Finish**” to complete the first driver installation.

After a few seconds the first window will show up again (“Found New Hardware Wizard”). This is because the driver comes in two separate parts, which both have to be installed. Go through the installation steps in the same way as before. After completion, the USB drivers are ready for use and indicate this by showing “HV Series: Device Ready” (or similar) in the lower right screen corner of your PC for a couple of seconds.

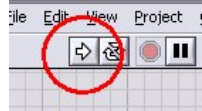
Windows usually recommends to restart Windows now, but for immediate use of the HV-Series devices one can skip this point. Nevertheless, the PC should be restarted at a later point and latest before installing any other piece of hardware or software.

3.2.2 LabVIEW™ control program

Assuming that LabVIEW™ in Version 8.2 or higher is available on the target PC, copy the path containing the LabVIEW™ source code VI's (\LabVIEW_source\HV-ControlPanel Folder\ui) from the installation CD to a proper place of your choice on a local drive. By double-clicking on the file



“HV-ControlPanel.vi” the control panel for the HV Series devices will open, which can immediately be put into operation by clicking on the start-arrow in the upper left corner.



See section below (4.2) for more details about how to operate the control program.

Executable version:

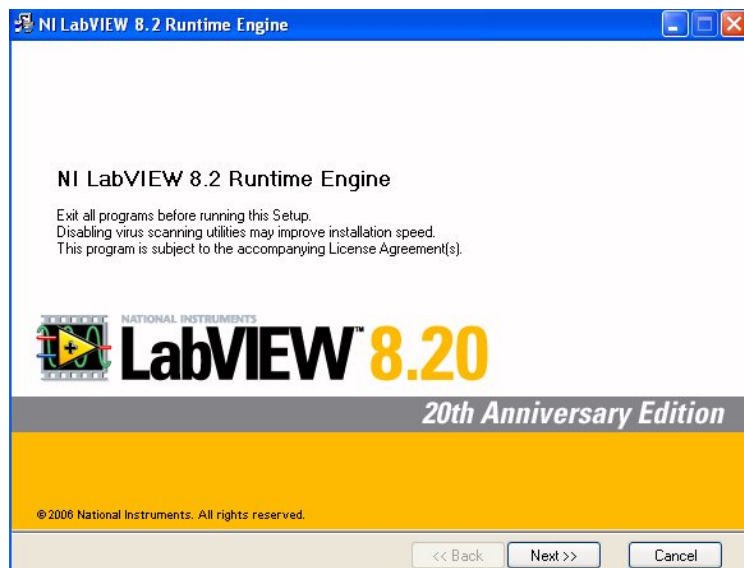
In case that the LabVIEW™ development software in version 8.2 or higher is **not** available on the PC controlling the device, there is a second option. The so-called “LabVIEW™ run time engine” can be installed from the installation CD and the control program can be run subsequently. In this case modifications of the control software or implementation in own programs are not possible, but the completed software can be run unchanged in the version as it is. Please contact manufacturer for more details and possibilities, in case changes of the program are desired.

To run the executable version, first install the **LabVIEW™ Runtime Engine** and follow the instructions.



LabVIEW82RuntimeEn...
RuntimeEngine File Icon

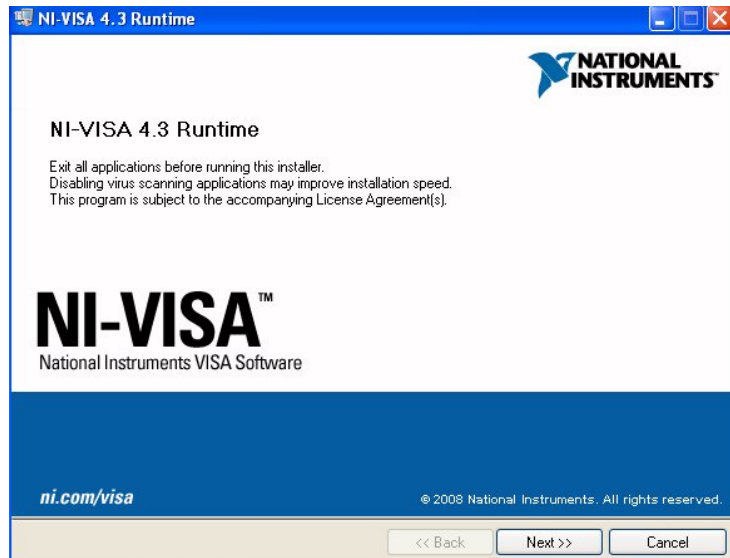
You will be requested to choose an installation directory and location for unzipping the required files.



As second step (in case not installed before on the respective PC) the **National Instruments VISA drivers** need to be installed, which enable the LabVIEW™ software



RuntimeEngine File Icon



accessing the PCs hardware resources.

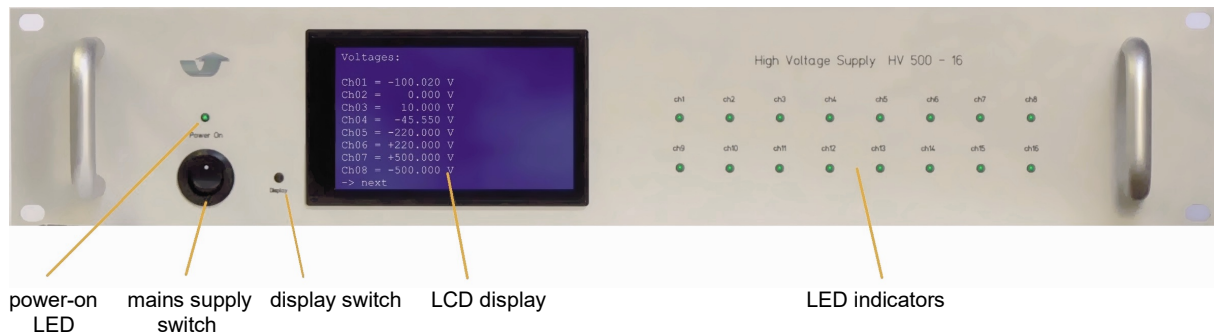
After completion of these two installations, the HV-Series control program (ControlPanel.exe) can be run as executable file.

Remark:

One known problematic point with National Instruments drivers is the fact that they tend to collide sometimes with other drivers, especially for Tektronix oscilloscopes. If in doubt the other drivers should be temporarily removed or disabled and installed again.

4. Operation and Control Elements

4.1 Elements on the front plate



The front plate contains several control elements for the device.

The device is powered up after turning on the rear-side **mains supply switch** and also the power switch on the front plate. **Before turning on, ensure that correct mains voltage is applied to the rear side mains socket. Never apply wrong mains supply voltage.**

The **Power-on-LED** (green) indicates proper operation of the internal circuitry. A warning beeper will temporarily sound, which is used for ventilation fan monitoring.

If the device is not in use, it is recommended to use the rear side mains switch to cut it completely off from mains supply. This is recommended in order to minimize standby-currents, and also for safety reasons (e.g. overvoltages occasionally occurring on the mains supply line).

The **LCD display** on the front side shows information about received commands or the latest voltage settings for the output channels. It can be run in two modes: In the “Protocol Mode” the device status is shown (device name, temperature, uptime etc.). The protocol mode also displays the elapsed operational hours of the device. This information is useful e.g. for deciding of routine exchange of the ventilation fan at the rear side.

In the “Voltage Mode” all programmed voltages are listed, these refer to the reference ground, which might be floated if any non-zero voltage is applied to the “floating GND input” (and are not referring to the case ground). The display modes are toggled by using the **LCD-display switch** on the front plate left besides the display.

The actual output voltages, being read from every individual channel, are also displayed right besides the programmed values. Please note that real output accuracy is much better than displayed on the LCD (see specifications in chapter 7). The front display voltage readings are understood as cross check of correct functionality, rather than precision indicators. The real output voltage is stable on a ppm-level (see also section 7), much better than the display readings suggests.

Note also, that readback of electrical currents is also available on customized request for a limited number of channels.

Voltages:	
Ch01 = -100.020 V	-100.0 V
Ch02 = 0.000 V	0.0 V
Ch03 = 10.000 V	10.0 V
Ch04 = -45.550 V	-45.6 V
Ch05 = -220.000 V	-220.2 V
Ch06 = +220.000 V	220.0 V
Ch07 = +500.000 V	500.1 V
Ch08 = -500.000 V	-499.9 V

Picture of LCD display in “Voltage Mode”

The LCD display goes into power-save mode after roughly 60min with reduced background illumination. Any press on the display switch reactivates the backlight again. By toggling to the Protocol Mode the serial number of the device and internal temperature can be seen.

The display changes automatically to protocol mode, if any severe malfunction should occur.

Note that the device may be damaged at internal temperatures exceeding 45°C for durations longer 5 minutes. If the internal temperature sensors indicate a value above 45°C, being visible on the front display (or by software readout), the device must not be operated, but switched off and the conditions, leading to overtemperature, removed.

The **LED indicators** on the right hand side of the device show the overload status of the individual output channels.

Green Light = everything ok, no overload.
Red Light = overload or error condition

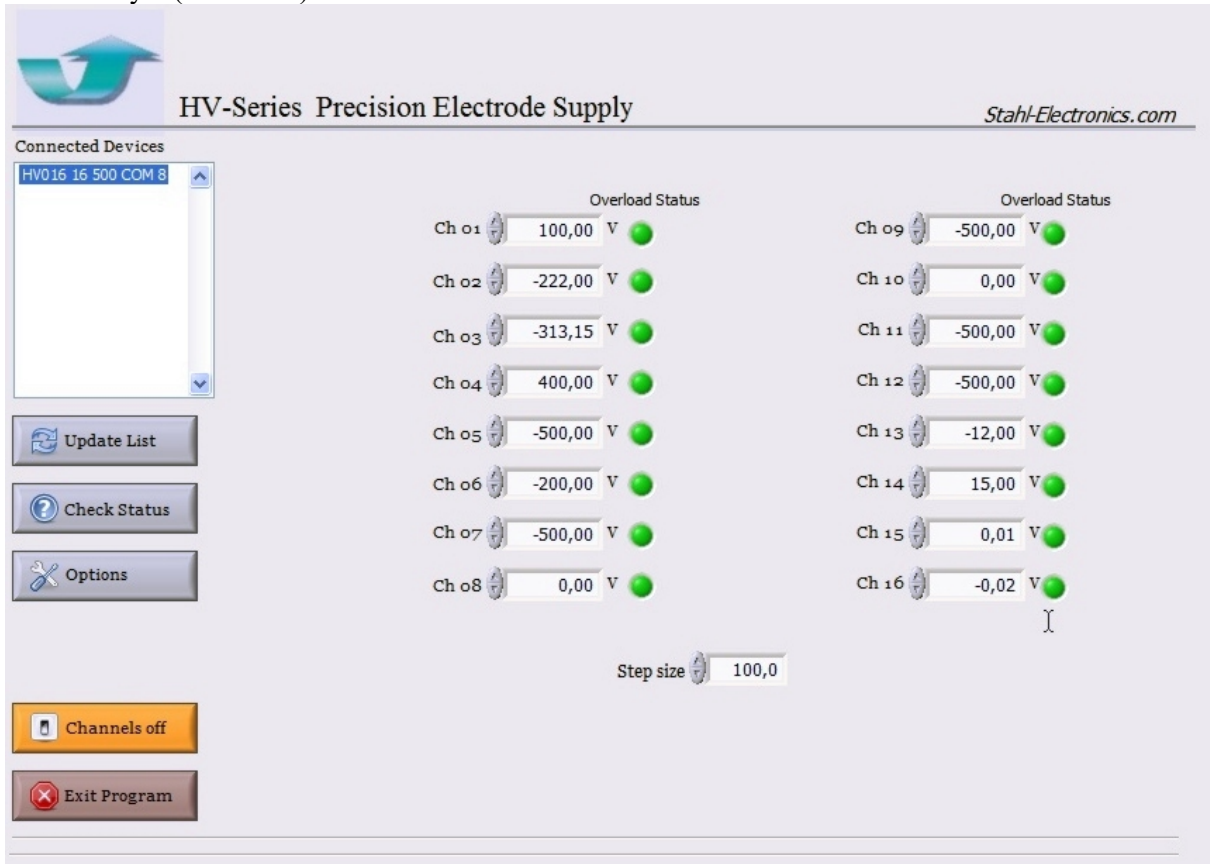
A LED will become red, when the programmed voltage cannot be held correctly at the respective output at the rear side. This can have several reasons. The most common are:

1. There is a problem with the external circuitry, which is attached to the device, maybe a short cut to ground or short cut to another channel or other voltage supply by external cabling.
2. Too much current is drawn from the output, e.g. because of heavy electrical leakage currents or discharges in vacuum.
3. With heavy capacitive loads (e.g. micro-Farads) the output takes several seconds to built up the desired voltage. The LED should become green again after some seconds.
4. An internal error appeared. The latter can be excluded if the LED becomes green again after removing all external cabling. Contact manufacturer otherwise.

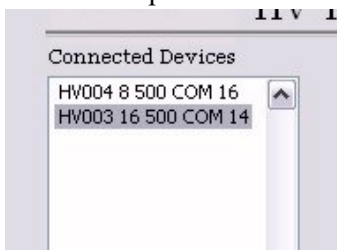
Please note, that in case large voltage steps are programmed (e.g. from minimal voltage to maximum value in an instant) the indicator might become red for a short moment, since the output value will not instantaneously coincide with the programmed value. This is a regular behaviour.

4.2 Control Software

The device is controlled through a serial interface (e.g. USB) by means of simple ASCII-strings. Please refer to Appendix and Programmers Guide for further details. For convenience, a LabVIEW™ program is being supplied by the manufacturer as well. After starting the LabVIEW™ main VI or application program, the following user surface will appear, which can be operated in a mostly intuitive style (see below).



While starting up, a list of connected device (upper left corner) will appear and the LabVIEW™ program ('HV-ControlPanel.vi') will list all recognized HV-Series devices inside this window. Please note that before making any change, a device should be selected (clicking once by mouse to highlight) for further operation.

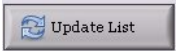


picture shows a list with two recognized devices inside the displayed list. A mouse click selects the device to be changed.

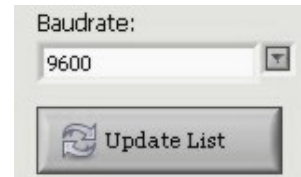
The information regarding the connected devices show:

- device serial number (e.g.: HV015, for a HV-Series device with serial number 015)
- the number of available channels on that specific device
- the voltage rating (e.g. 400V)
- the COM port number, under which the device will be accessible in Microsoft Windows from the PC.

Note, that the USB driver on the PC will enumerate detected USB devices automatically. This COM port number may vary from one PC to another PC and does not depend on the connected HV- Series device itself.

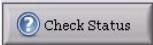
If a new device is connected to the PC while the program is already running, the list can be manually updated by pressing the  button. In that case the software will check for possible new added devices and extend the list correspondingly.


In case the respective option is installed, the program can also communicate with connected devices in selectable COM port speeds (standard speed: 9600 Baud, others upon customization). This Baud rate can be chosen in a drop down menu, to match the speed of the selected device or entered manually. Note that the displayed list of connected devices shows only those with the selected communication speed, while other devices (with a different speed) won't be visible in this list. If the speed setting is changed, press 'Update List' once or twice to have the program checking for devices, which answer at the new selected speed.




On the right hand of the screen the voltages of each channel are in the numerical control field, either manually by entering numbers or by clicking on the up/down arrows. A step size can be defined in the control field underneath the voltage controls.



At right hand side besides the numerical control field for the voltages, the “Overload Status Indicators” appear. They are similar to the LEDs on the front plate and indicate the status of the regulation circuitry for every channel. As long as the set voltage can be held, the indicator is green, otherwise red. Routinely once per second the control program reads the actual status over the USB bus and updates the indicator colour. Nevertheless, the standard automatic update rate of once per second could be slowed down by considerable CPU load or competing LabVIEW™ processes, working in parallel. A forced and immediate status check is provided if the user clicks on the  button.

After pressing the Options Button , the user can in the subsequent window manually read the device internal temperature or enter manually commands to the HV- Series device (recommended only for advanced users, see also the list of commands in the appendix).

A click on the  button brings all channels to zero voltage. Please allow a few seconds for all output to assume zero. Note that “zero” refers to the internal GND, which may float versus the case ground in case the “floating ground” option is installed.

Note: Voltage and Current Readback

The actual voltages at the outputs can be read back by self-written programs using the corresponding ASCII command (see Appendix, applies for devices of production date later 12/2014). By default, the readback values are not displayed on the LabVIEW surface provided with the device by the manufacturer, in order not to slow down the program excessively. Note that in normal operation (overload status not *red*) the voltages are highly accurate and stable (milliVolt level) and in most practical cases do not need to be read back, unless significant current is drawn, which in case of static electrodes not relevant. An explicit Current readback is only provided in customized versions.

4.3 Output Characteristics

General properties

The HV series devices feature precise and stable bipolar voltage outputs. With respect to the reference ground their voltage range is (depending on device variant) +/-40V to +/-500V with true 4-quadrant sink or source capability and continuous zero-crossing, without gap or switching spikes.

The output lines assume the voltages, which are programmed via the USB link. Each channel can deliver up to the internally limited output currents (see also specifications in chapter 7). The purpose of the limitation is mainly to restrict currents to an amount, which is only minor harmful to external devices or human beings.

Before using a channel, the user should ensure the completion of external cabling. It is highly recommended, **not** to plug or unplug a cable, if the high voltage is already present: In case larger capacitive loads exist or an unintentional short cut to ground or any other voltage, high temporary electrical currents or gas discharges in air are able to damage the HV device severely or eventually other externally connected devices. Always finish cabling **before** turning the respective output channel on.

The capacitive output load should not exceed 100nF, to ensure stability. Higher loads can create instabilities, which may be noticed e.g. with a standard Multimeter or by an instable reading on the front plate.

Resolution

The outputs feature a stable setting of voltages with roughly 10mV resolution (2mV for model HV 40 and HV50, 1.5mV for HV 75, 3mV for HV 100), corresponding to an internal resolution of 16 Bits. Every output is equipped with a precise correction loop, which ensures low fluctuations and very good stability in order of a few ppm (see section 7 for further details).

Settling time

The outputs voltage settling time depends on the external load and is generally limited by the maximum voltage slope of roughly 2000V/sec and possible output currents (see specification table). Under moderate loads the output will be accurate to better 0.1% of span in less than 5 sec., after any change of voltage on a certain channel. Note that certain devices (e.g. HV 75, devices with current readback) may be featuring others slope speeds and that this parameter can be customized.

Output accuracy, fluctuations and loads

Precision components ensure a remarkable basic accuracy and very low long-term drift, both on a 10^{-5} level and better. A PID regulation loop on every individual output ensures very good stability and compensates for fluctuations from temperature-drifts or semiconductor-inherent low frequency noise. Intrinsic short term stability is therefore on the level of Millivolts, corresponding to only a few ppm's (part per million) with respect to the full voltage span. See also fluctuation data graphs in section 7.

All outputs feature protection resistors of 2.7kOhm (except: HV 40: 1.0kOhm, HV 75: 470Ohm, HV 2000: 20kOhms) serially to the internal output amplifiers, which will cause a voltage drop as soon as current is drawn from any output. Please take into account that voltage drop (according to Ohms law) for operation with considerable load currents or for high precision measurements. Note, that also Digital Multimeters draw a considerable current. E.g. $500V / 10M\Omega = 50\mu A$ is drawn from a multimeter with 10 MOhm input resistance if a voltage of 500V is programmed. Loading the outputs with currents in the order of 100 μA therefore should be avoided, if best possible precision is required.

The capacitive output load should preferably not exceed 100nF, to ensure stability. Higher loads can create instabilities, which can be easily noticed with a standard multimeter or an instable reading on the front plate display. Note that upon customization, higher loads can be acceptable (please contact manufacturer).

Short cuts or other heavy loads at the outputs

Generally, all outputs are short-cut proof, with respect to GND-short cuts or short cuts to any voltage between the specified min./max. voltage (e.g. +/-500V for a HV 500 - xx device). Nevertheless, suddenly occurring short cuts or overvoltages, for instance caused by sparks or other discharges represent a considerable hazard. Even though the outputs feature an internal protection circuitry, care should be taken to avoid any possibility to create overvoltages or heavy output current loads, in order to ensure a long lifetime. Also, intentional short cuts at the outputs, e.g. caused by high voltage semiconductor switches are not admissible. In case a fast switch is placed at the output for switching purposes, a series resistance in the order of 1kOhm at the respective output is recommended to avoid excessive peak currents. **Note that the device must not be operated at output currents exceeding the specified values (see sec. 7); otherwise, it may be damaged or overheat.**

Recovery from Overload

If an overload condition occurs (indicated by red LED light on the front plate), the outputs show a hysteresis behaviour, which means that the load has to be diminished to a certain amount below the overload threshold, or completely removed. This hysteresis is typically 10% of current limit or a few volts with respect to voltage. Allow the output overload detection circuitry 2-5 seconds to pass before indicating green light after the overload condition was removed.

Error-Out Detection

In devices starting from manufacturing year 2010, an additional output is provided at the rear side of the device, which delivers a logic 0V/5V level. When *any* PID loop for output regulation goes to saturation (corresponding LED on front plate getting red), this level becomes zero, +5V otherwise. Note that this output is not provided for devices with offset input (floating ground option).

Lemo Monitoring outputs (Option)

In case this option is installed, all DC output voltages can be monitored at NIM-compatible Lemo sockets with 1/1000 of attenuation. Voltage dividers of 200MΩ and 200kΩ to case GND connect the outputs internally to these monitoring outlets. The typical scaling accuracy is 1%, max. 2.5% of error deviation.

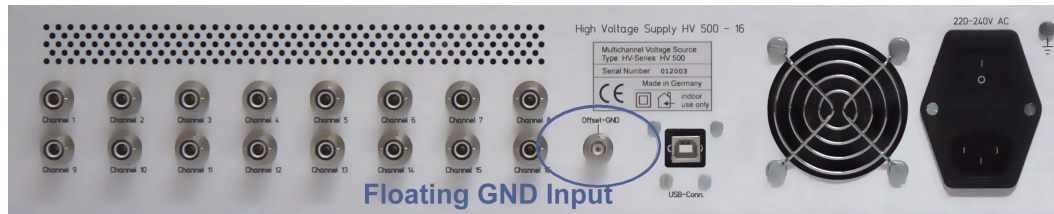
4.4 Switching the device off

After switching the device off (from mains supply) the output voltages will assume ground potential. Let at least 20 sec. pass (U.S. variants: 3 minutes), in order to allow the voltages to fade out, before changing the cabling or touching any bare output line by hand. Beware of voltages on the Offset-GND line (in case the floating ground option is installed), since the latter is also fed to the output lines.

In general, it is recommended to use the rear side mains switch, in order to completely separate the device from external supply.

5. Using the Floating Ground Option

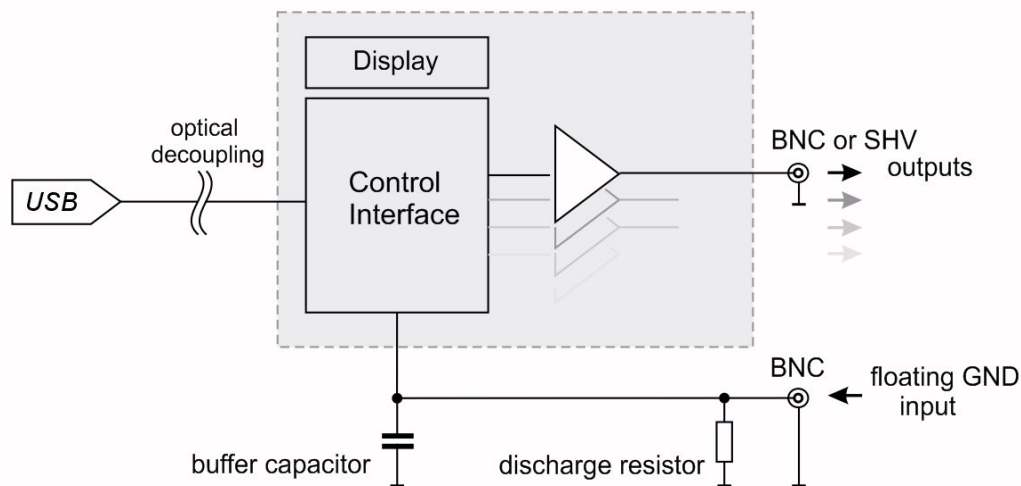
(not available for some version with analog inputs like HV-AMP or 500-16 b/a or HV 1000)



In case the option for floating ground is installed, the user has the possibility to float the reference ground to a certain amount with respect to the case of the device and shielding ground of the attached SHV cables (or BNC cables). Please note, that the voltage settings given from the control program refer always to the local reference ground only. The *absolute* value of voltage at any output with respect to the case ground is therefore given by the sum of the externally applied voltage at the floating ground input and the programmed value, as mentioned above. The device does not measure the externally applied voltage and does not display its value. Any voltage on the “floating GND/Offset GND” input places therefore a common offset to all of the voltage values, which are programmed by the user:

$$U_{OUT,i} = U_{programmed,i} + U_{floating\ input}$$

where $U_{OUT,i}$ means the real output voltage referred to case and protection ground (= shield of SHV/BNC cable) on output number i
 $U_{programmed,i}$ means the programmed value for output number i , and
 $U_{floating\ input}$ means the voltage applied by the user to the floating GND input.



Please note that if there is no intention to commonly shift the output values by using the Offset-GND input, the respective BNC-plug **must** be shorted (with a short-cut plug) or terminated with 50 Ohms in order to define the commonly added voltage to zero. In case there is no such termination, correct functionality of the device is not obtained.

The stability of the externally applied voltage and its dependencies on loads has to be taken into account, for considering output stability and precision of the output voltages, if they are measured versus case ground. The external voltage adds up with the respective values of the HV device, and therefore voltage errors and drifts do as well. The same is true for voltage drops because of finite resistances: The output resistance of the external supply, feeding the floating ground input, may cause a voltage drop, if considerable currents are drawn through the HV Series outputs.

As shown in the block diagram, a buffer capacitor (approx. 47nF to 2.2μF) at the “Offset GND” input provides already a reasonable amount of short term stabilisation in the order of seconds. Please note, that any voltage source, applied to the floating ground input, must have a *current* limitation in order not to potentially cause damage. Note, that a limitation value of $I_{\max} = \pm 25\text{mA}$ or smaller is recommended.

An overvoltage protection at that input line inside the HV Series device provides limitation to $\pm 360\text{V}_{\text{DC}}$ versus case ground (unless specified otherwise). The user should not exceed the rated offset voltage at this input. The isolation resistance of the floating GND versus the common GND (case GND) is typically larger 5GOhm, eventually diminished by an discharge resistor installed as noted on the rear side of the device (typ. 50MΩ to 1GΩ).

Turning the device off (in case of floating ground usage):

Attention: in case an external voltage is supplied to the floating GND input, ensure to discharge the latter after usage or wait at least 5 minutes (after disconnecting the floating GND input cable) to prevent electrical shock in case leads connected to the device outputs will be electrically accessible.

6. Analog read back option

In case this option is installed, all output voltages can be read back in an analog fashion and are being presented via a 1/100 voltage divider on a Dub-D 25 pole socket (female) on the rear side. The pin number corresponds to the channel number, channels 23 to 25 refer to the case GND. Note that the voltage is referenced to the case GND, including the offset. E.g. channel 1 = 100V, offset input = 150V => pin 1 voltage = 2.5V. An external termination resistor of 10MOhms is assumed.

Note also that if this option is installed, the resistance of the floating GND input versus case GND is diminished to about 11 MOhms in case of 8 channels and to 5.5 MOhms in case of 16 output channels.

7. Maintenance

The HV Series Voltage Source is designed for years of reliable operation. Under normal operating conditions, it should not require electrical maintenance, except routine cleaning of dust. Exchange of ventilation fan is strongly recommended every 50'000 operation hours (see below). If any question should arise, please contact the manufacturer.

Routine cleaning

All ventilation openings – top, bottom, sides, and rear panel – should be checked periodically and kept free of dust and other obstructions. A vacuum cleaner may be used to clean these vents when the unit is powered off. Do not use compressed air to clear the vents. The front panel may be cleaned periodically with a clean cloth and mild alcohol solution, when the unit is powered off. It is recommended to send the device to the manufacturer routinely in 2-year intervals for internal cleaning from dust.

Calibration

Under normal operating conditions, the HV Series Voltage Source will not necessarily require regular calibration. However, it can be returned to factory for complete electrical and mechanical inspection and calibration purposes. Also, if required, a certificate can be issued for traceability. Contact manufacturer for additional information.

Fan lifetime and temperature monitoring

The air ventilation fan is a part which shows unavoidable deterioration in time. Exchange of this part is strongly recommended after 50'000 hours of operation. Please contact manufacturer for replacement. Complete failure can lead to overheating of the device. Several temperature fuses and other protection measures provide a certain degree of safety against fire hazard in this case. Nevertheless, it is strongly recommended to read out regularly the devices temperature by software means in order to monitor the devices internal temperature and therefore to ensure avoidance of damage to the device or fire hazard. The elapsed operational time can be checked in the protocol mode (see section 4). A warning sounder (beeper) will activate in case of low fan rotational speed.

Fire hazard

Please note, that excessive accumulation of dust inside the case of the device can lead to overheating. This, together with possible discharges increases the risk of fire, caused by electrical sparks. Routinely cleaning the device from dust minimizes this risk. It is therefore recommended to send the device to the manufacturer routinely in 2-year intervals for internal cleaning from dust, or to have it cleaned by an accordingly qualified electronical workshop. Also air conditions containing oil mists (e.g. proximity to a vacuum pump or mechanical machines) place a severe danger, since inflammable substances could enter the device through the ventilation holes. If in doubt, cleaning by an accordingly qualified electronical workshop or the manufacturer is strongly recommended.

An increased hazard of fire may also occur if the device has been (permanently or temporarily) located in proximity to a strong (e.g. superconducting) magnet. A maximum external field of $B = 5\text{mT}$ is admissible and must never be exceeded at any time, regardless whether the device is turned on or off.

Decommissioning

Decommissioning of the device is recommended after latest 130'000 hours of operation. Please contact manufacturer for appropriate waste disposal and observe applicable legal regulations.

8. Specifications

Output Specifications:			
Output Voltage Range	HV 40-xx to HV 500-xx (xx = number of channels, 1 to 16)	-40V ... +40V to -500V ... +500V, <i>continuous zero crossing, without interruption</i> For further details regarding device variety please refer to section 2.3 (page 5)	
	HV 1000-xx	-1000V... 0V or 0V...+1000V (note ³⁾)	
	HV 2000-xx	-2000V... +100V or -100V...+2000V (note ³⁾)	
Output Connectors	HV 40 to 500	BNC (standard) or SHV (option), D-Sub (option)	
	HV 1000, 2000	SHV (customized on request)	
DC Output Current	HV 40	+/-2.5mA, guaranteed possible value, each channel ¹⁾	
	HV 50	0 up to ±200 µA guaranteed possible value, each channel ¹⁾	
	HV 75p	+/-9mA guaranteed possible value, current customizable	
	HV 100	0 up to ±250 µA guaranteed possible value, each channel ¹⁾ , optionally +/-500µA guaranteed Hi-Current version HV100-4: +/-1mA guaranteed	
	HV 110p	+/-75µA guaranteed possible value, +340µA max. value	
	HV 200	0 up to ±100 µA guaranteed possible value, each channel ¹⁾	
	HV 500, HV400 HV 1000, 2000	0 up to ±70 µA guaranteed possible value, each channel ¹⁾	
	Max admissible per device <i>see note ²⁾</i>	+/-22mA (HV40), +/-12mA (HV50), ±6mA (HV100), ±350 µA (HV200), ±300 µA (HV 400 to HV 2000)	
	Max. possible current per output (overload)	+/-10mA (HV40), +900µA, -4mA (HV100), +450µA, -900µA (HV 50) +200µA, -420µA (HV 200 to HV 1000)	
DC Output Resistance		all versions 2.7kOhm, except HV 40, HV100: 1.0kOhm, HV 2000: 20kOhm, HV 75-1p: 47Ohm	
Output Fuse		no fuses in devices from manufacturing date 2013 and later	
Sink/Source Capability		full 4 quadrant-operation of outputs except HV 1000, HV 2000 variant or in case of unipolar outputs	
Reference Ground	Standard	All outputs share a common GND (= case ground)	
	Floating (option)	Reference GND may float ±350V vs. GND of case, or 500V, 1kV or 2kV, specified separately each device. Floating GND isolation typ. 100M to 1GOhm, except if analog readback option (Sub-D output) is installed: approx. 5MOhm.	
Accuracy and Stability:			
Digital Control			
Parameter assuming T _{ambient} = 21°C...26°C	typical (see note 4)	maximum (see note 4)	typical drift
Scaling Error of Setting, Related to full span	0.015%	0.05%	0.002% per day 0.014% per year
Offset Error HV40, HV 50, HV 75p HV 100, HV 110p HV 200 to 1000 HV 2000	±1.5mV ±3.5mV ±10mV ±70mV	±3.5mV ±7mV ±100mV ±200mV	±0.3mV per day ±0.5mV per day ±3mV per day ±10mV per day
Ripple (50/60Hz including harmonics) HV 40 HV 50, HV 75p HV 100, HV 110p HV 200, HV 500 HV 200-2 HV 400 HV 1000, HV 2000	0.2mVpp 0.5mVpp 2.0mVpp 2.5 to 5mVpp 2mVpp 0.75mVpp 10mVpp	0.4mVpp 1.2mVpp 3.0mVpp 50mVpp 75mVpp	
Noise 10 Hz ...10MHz HV 40 HV 50 HV 75p HV 100, HV 110p HV 200, HV 500 HV 200-2 HV 400 HV 1000, HV 2000	0.04mVrms 0.13mVrms 1.0mVrms 1.5mVrms 2mVrms 1mVrms 0.4mVrms 9 mVrms		load ≥ 1nF, for HV 75p > 100µF

	typical	maximum	remark
Low Frequency Noise 0.1 ... 1 Hz HV 40 HV 50 HV 75p, HV 100, HV 110p HV200, HV 500 HV 200-2, HV 400-8	0.015mVrms < 0.3mVrms 1.1mVrms 1.3mVrms 1.0mVrms	0.035mVrms	
Channel crosstalk (DC voltage change on any channel, influenced by any other channel)	1.2ppm (HV 100 to 2000) 2.5ppm (HV 50)	2.5ppm (HV 100 to 2000) 5.4ppm (HV 50)	
Temperature Coefficient Scaling, HV 40 to HV 1000 HV 2000 Offset HV 40, HV 50, HV 75p Offset HV 100 to 1000 Offset HV 2000	typ. +/-10ppm/K +/-45ppm/K 1mV/K 1.5mV/K 6 mV/K	max. +/-18ppm/K +/-120ppm/K 2.1mV/K 4.5mV/K 20mV/K	
Digital built-in Voltmeters on LCD Screen, Front Plate			
Accuracy of Voltmeter:	typical	maximum	remark
Scale error	0.1%	0.3%	
Offset error	0.1V	0.3V	HV 40 to HV 1000
	0.8V	1.3V	HV 2000
Fluctuations	0.02Vpp	0.05Vpp	HV 40, HV 50, HV 75p
	0.1Vpp	0.2Vpp	HV 100, HV 110p
	0.2Vpp	1Vpp	HV 200 to HV 1000
	0.7Vpp	1.8Vpp	HV 2000
<i>Optional:</i> Current Readback Accuracy of Amperemeter:			
Scale range	0 to +/-220µA		
Scale error	0.05%	0.12%	
Offset error	50nA	150nA	Offset error may increase at output voltages larger 300V due to leakage currents
Fluctuations	10nA rms		
Readout speed	40 readings/sec		in case, the next readout command is immediately sent, after previous received, see also Programmer's Guide
Remote Control / Communication			
Remote Connection Hardware	USB 2.0 compatible connection to PCs with galvanic isolation 9600 Baud (virtual COM port, data format is 9600 8N1), unless customized, 115200 Baud in case of option current readback		
USB Isolation Rating	max. +/-350V vs. case GND, or 1000V optional		
Command Language	Clear ASCII code, commands see Appendix		
Driver Support	USB drivers are required and available for various operating systems. Free LabVIEW™ 8.2 based user surface and driver routines are available.		
Environmental Conditions			
Magnetic Field	max. 5 mT admissible, beware to never exceed		
Storage Temperature	-55 C° to +85 C°		
Operating Humidity & Temperature	noncondensing relative humidity < 85%, at temperatures between +10°C and +25°C.		

Power Supply and Case Dimensions	
AC Supply Rating	AC input voltage 230V _{AC} (±5%) at 50Hz or alternatively 115V _{AC} (±5%) at 60Hz The power entry module is EMI/RFI-filtered. Fuse (115V): slow blow 2.0A; (230V) 1.6A; Over Voltage Class II
Power Consumption	typ. 34 W (2, 4 or 8 channels) typ. 36 to 56 W (16 channels), maximum 65 W
Dimensions	19.00" wide x 10" deep. Front-panel mount holes are configured for 19" racks
Weight	approximately 4.8kg, configuration dependent

Notes

1) except: see limit per device

2) exceeding the specified value for durations longer 5 minutes may lead to overheating, may damage the device and increases the risk of fire; beware of operating the device with output currents above the rating.

3) note: not sold outside EU

4) Initial setting by factory. Please observe possible temporal and temperature drifts.

Typical Output Traces

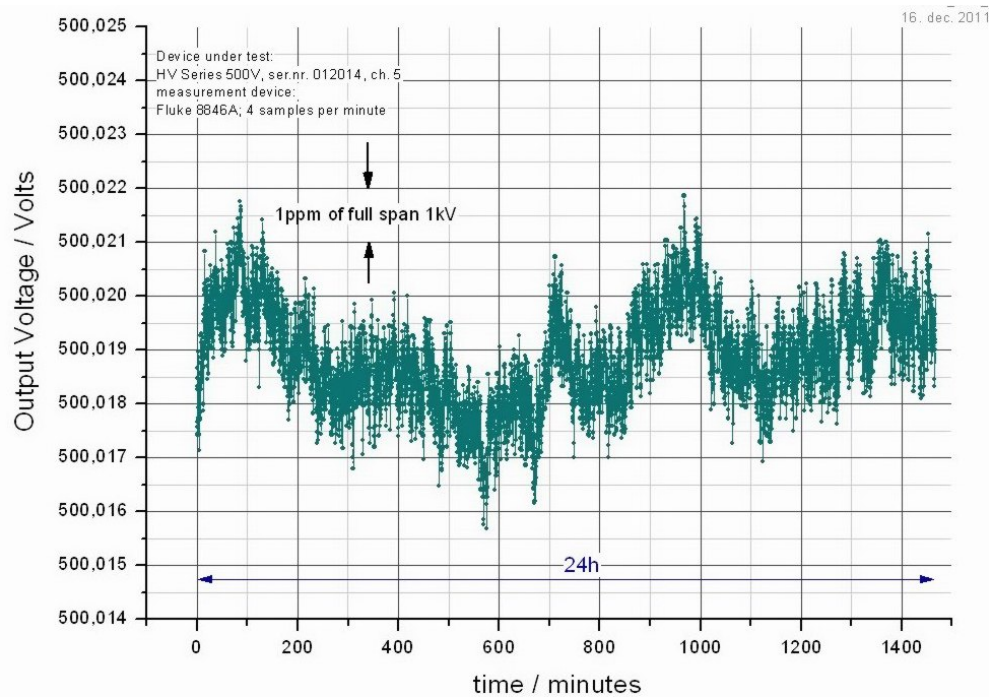


Fig. 7.1: This graph illustrates the **ppm-level** stability of an output channel at +500V over an 1-day interval. Measurement device was a Fluke 8846A multimeter, 10sec. averaging per data point. The room temperature has been determined to be constant within $\pm 1K$ during the measurement.

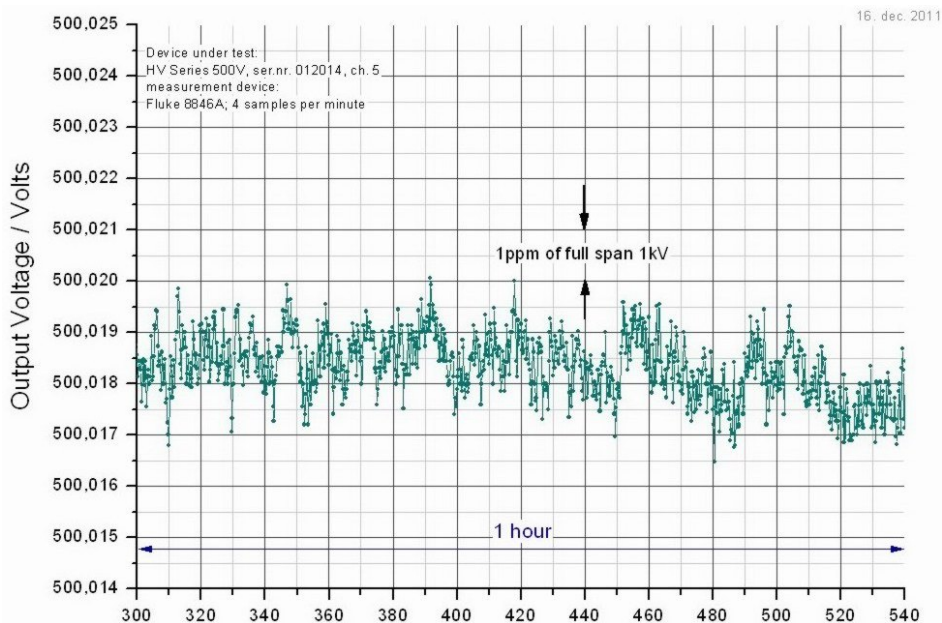


Fig. 7.2: This graph depicts the stability of an output channel at +500V over a 1-hour interval. Measurement device was a Fluke 8846A multimeter, 10sec. averaging per data point. The room temperature has been determined to be constant within $\pm 1K$ during the measurement. One vertical unit equals 1mV, which is 1ppm of the total output span of 1000V.

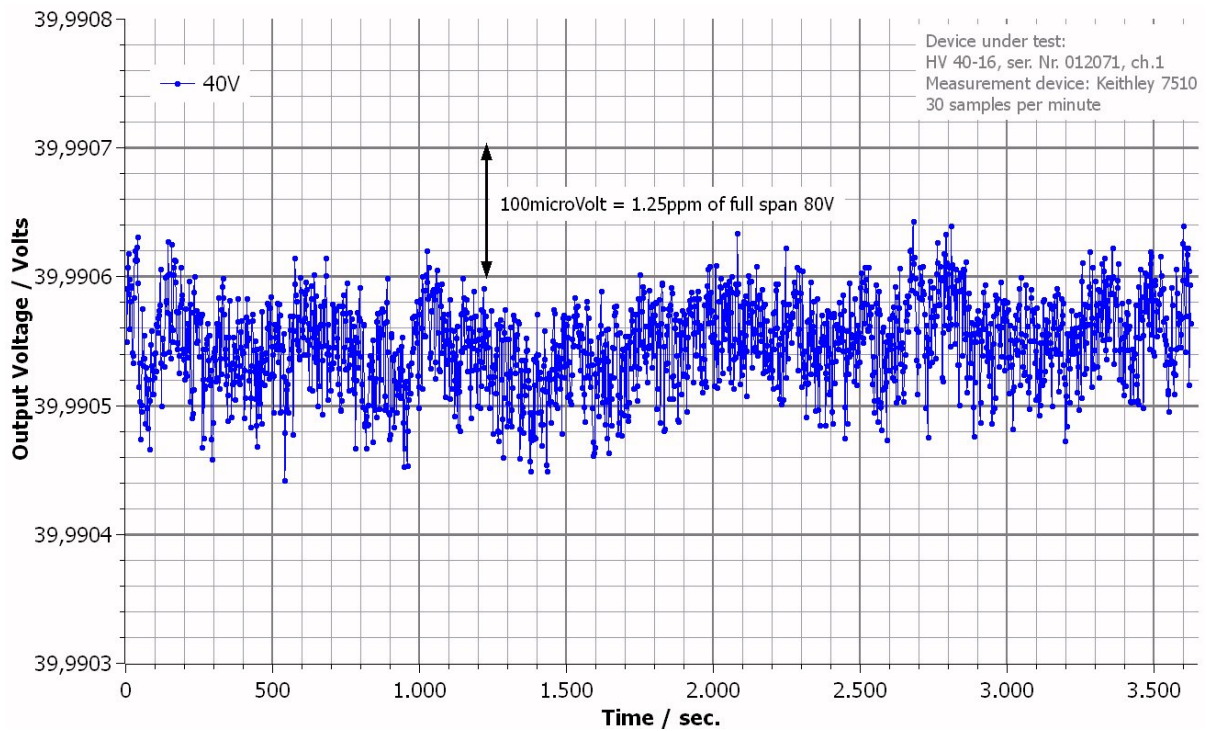


Fig. 7.3: This graph illustrates for a HV 40 device (+/-40V output range) the stability of an output channel at +40V over an 1-hour interval. Measurement device was a Keithley 7510 multimeter, 2sec. averaging per data point. The room temperature has been determined to be constant within +/-1.5K during the measurement.

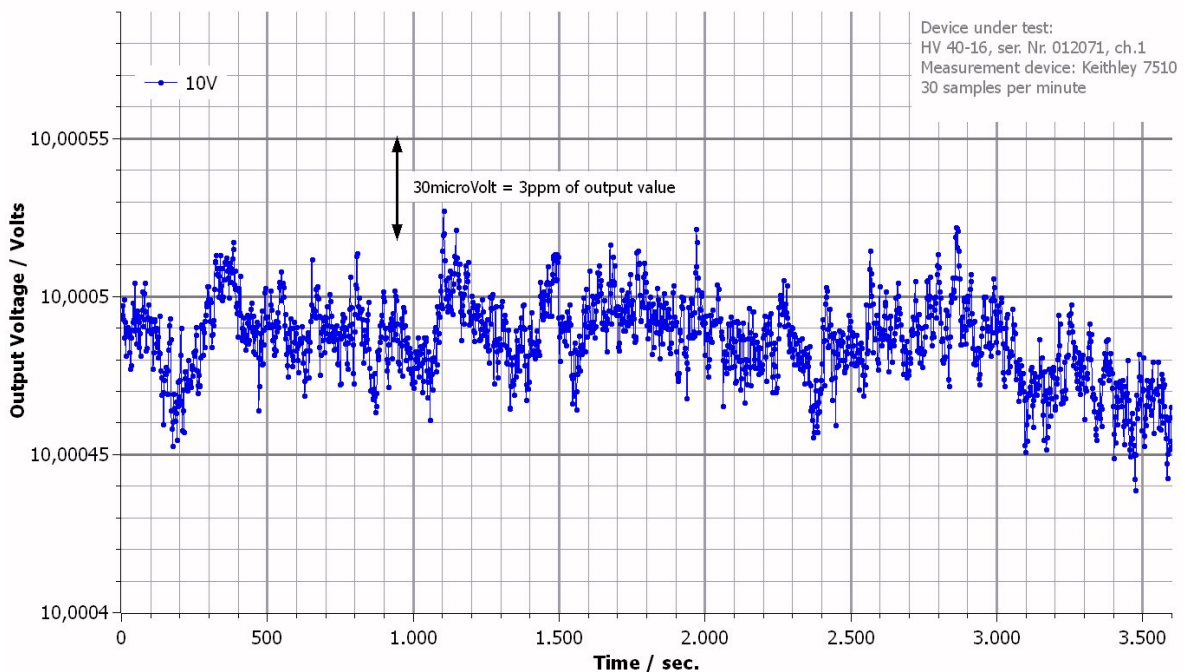
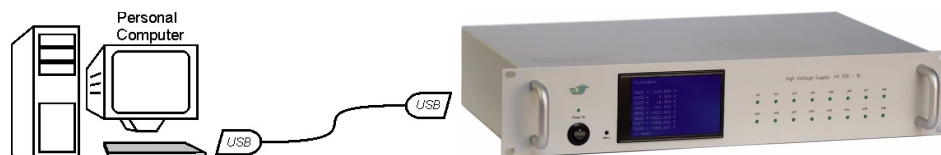


Fig. 7.4: This graph illustrates for a HV 40 device (+/-40V output range) the stability of an output channel at +10V over an 1-hour interval. Measurement device was a Keithley 7510 multimeter, 2sec. averaging per data point. The room temperature has been determined to be constant within +/-1.5K during the measurement.

Appendix



Remote-Control and List of Commands

The device can be controlled in an easy way using the provided **LabVIEW™** open-source code blocks, or by self-written program code. Standard program compilers/interpreters like **Python**, **C++**, **BASIC** or **Pascal/Delphi** dialects may be used for own code writing, also generic command-line terminal programs (e.g. HyperTerminal™) will do. However, the physical line connection to the device (USB-connection) needs to be established beforehand, like described in section 3.2.1. USB-drivers for Windows™ versions, Mac OS and Linux are readily provided. Please check eventually the USB-manufacturers homepage (www.ftdichip.com) for latest updates. Also, RS-232 and RS-485 communication is optionally supported, please refer to dedicated data sheets.

Establishing USB connection and sending commands:

Before sending any command, the USB connection to the device has to be established. This is basically done by connecting the device by a suitable cable (standard USB A- and B-plug) and installing an appropriate USB driver. Drivers for Windows, Mac OS and Linux are provided by the manufacturer. You might also consult the USB-circuitry manufacturers homepage (www.ftdichip.com) for latest updates. The readily available “virtual COM port” (VCP) drivers allow simple access on the USB connection in the fashion of “classical” serial port (RS232) communication. This means, once the connection is opened, the user can send clear-text ASCII-strings over USB line to the connected device. The default baud rate is pre-set at 9600 bits per second, i.e. one voltage setting command takes about 35millisec (see also below). The data format is 9600 8N1 (i.e. baud rate at 9600 bits per second, 8 data bits, no parity bit, 1 stop bit) and no flow control. Note that the optional RS 485-module operates at a baud rate of 230'300.

The following table lists some available commands, their functions and text strings which are returned from an HV-device as answer. For simplicity several abbreviations are used: “DDDDDD” stands for the name of the device including its serial number. This serial number can be found on the rear side of the device (last 3 digits) or (on newer devices) be read on the front screen in the “protocol mode” of the front LCD-panel (press the display button to activate the protocol mode). For instance, “DDDDDD” = “HV040” means HV device with serial number “040”. Generally, all commands must be terminated with an ‘Return’ (13 in ASCII code). After establishing the USB link to the HV device and turning it on, an “IDN identifier request” can be sent in order to retrieve the serial number, which will be used to address the device. Please see also examples and more details after the table and note that devices with production date later **May 2021 feature an extended command set**, to further simplify device access. Please check separate PDF file (programmer’s guide) for comprehensive descriptions.

Command Function	ASCII Strings sent to device or received + CR (‘carriage-return’) at string ends	Observations and comments
Identify device	sent IDN received DDDDD	The device replies with its name, serial number (DDDDDD) and further information. See also examples below this table.
Set voltage (*)	sent DDDDD CHXX Y.YYYYYY received CHXX Y.YYYYYY or ACK-sign (depending on	An output voltage is set. XX is the addressed channel number (01 up to 16), Y.YYYYYY is a decimal number between 0.000000 and 1.000000 which represents the scaled voltage. I.e. 0.000000 represents the minimum voltage (e.g. -200V), 1.000000 the maximum value (e.g. +200V). 6 digits after the decimal point are required.

	firmware version)	
Query voltage (**)	sent DDDDD QXX received +/-yy,yyy V	Requests read-back of internally measured voltage of channel XX. The return string contains voltage including dimensions (voltage unit). Note that the real output values is more precise and stable than the read-back values.
Read temperature	sent DDDDD TEMP received TEMP XXX.X°C or TEMP XXX.X°C YYY.Y°C	XXX.X (and eventually YYY.Y) is the temperature in degrees Celsius, measured at one or two internal temperature sensors. These values should be regularly checked (e.g. once per minute) while the device is in operation. Temperatures above approx. 45°C indicate a possible ventilation problem or other malfunction. The device should be switched off in this case to prevent serious damage or fire hazard, and the cause of overheating must be investigated
Check lock status of all channels	sent DDDDD LOCK received B ₃ B ₂ B ₁ B ₀	Probes all channels to see if any is overloaded. The response is coded into 4 bytes (B ₃ to B ₀), see also definitions below. If a Bit is zero, then locking is ok, if = 1 then an overload occurred in the respective channel.
String to LCD-display	sent DDDDD DIS L "string" or DDDDD DIS L CHXX "string" received [ACK-Symbol]	Sends a "string" (arbitrary chain of ASCII characters, max. 16 characters long) to the front LCD display of the device. If a channel number XX is transmitted the string will be placed in the line of the corresponding channel XX. Otherwise the string will only be visible in the 'Protocol Mode' of the front display. Note that the provided LabVIEW source code uses this command to indicate the set voltages, since the 'Set Voltage' command only transmits a scaled voltage, which is not easily readable ASCII text.
Set correction parameters	sent DDDDD CORR received CORR	Change of correction parameter, in a dedicated LabVIEW control, or coded as shown below. For adjustment during manufacturing process and later re-adjustment only. (Please note that the CORR-command takes longer time than the other commands, allow 1sec for the device to reply)
For further detailed information please refer to user programmer's guide , being provided in a <u>separate PDF file</u> .		

remarks:

(*) Devices before production date 12/2014 accept only 5 digits after the decimal point, devices produced later expect 6 digits.

(**) The Query command is implemented in devices produced later than 12/2014

**Definition of device identifiers,
received from a device upon request by the "IDN" command:**

After sending "IDN" from a PC to the device, the returned identifier string consists of several parts, delivering information about the device. Every part is separated from the next by a normal "space"-character:

Example:

“HV052 500 16 b” = “HV” + “052” + “ 500” + “ 16” + “ b”

That means: a HV-series device answers, serial number is 023, voltage range 500V, 16 channels, and having bipolar outputs. The last character represents the device type:

b - bipolar device

u - unipolar device

q - quadrupole device (for electrostatic quadrupole lenses)

s - steerer device (for electrostatic steerer lenses)

This identifier string is programmed into the FlashRom of every HV-series device by factory.

The different string options are:

first string part: always “HV”

2nd part: serial number between “001” and “999”

3rd part: voltage range of device in volts, can be any (integer) number between 1 and 100000

4th part: number of channels, presently either “4” or “8” or “16”

5th part: “b” like bipolar or “u” like unipolar “q” like quadrupole lens supply, “s” like steerer supply

Several Command Examples for setting a voltage:

The command “HV014 CH02 0.00000” puts channel number 2 on minimum voltage, i.e. -500V for a HV500 device (assuming the devices serial number is 014).

The command “HV014 CH02 1.00000” puts channel number 2 on maximum voltage, i.e. +500V for a HV500 device.

The command “HV014 CH02 0.50000” puts channel number 2 on half span between minimum and maximum, which is zero voltage.

Note, that all other voltages between “0.00000” and “1.00000” are scaled linearly, e.g. “0.75000” represents 75% of full span above minimum voltage, which is +250V for a HV500 device.

Coding of the 16 channels/bits into the control 4 bytes B₃B₂B₁B₀:

The following encoding is used for the “Check Lock” command.

The first 4 bits (= upper nibble) of every Byte is always 0001 = 16_{dec}. This ensures to avoid certain bit-combinations, which could cause trouble to USB/RS232-based communication (like the traditional commands “enter”, “escape”).

Next 4 bits (=lower nibble):

in B ₀ :	ch16	ch15	ch14	ch13
in B ₁ :	ch12	ch11	ch10	ch09
in B ₂ :	ch08	ch07	ch06	ch05
in B ₃ :	ch04	ch03	ch02	ch01

For instance B₀ = 0001 0011 means with respect to the lock-status that 3 and 4 are ok, 1 and 2 not locked.

Correction Command (for advanced users and factory settings)

The correction command is primarily used within the manufacturing process and adjusts correction routines inside the HV series devices. The format of the correction command looks like

“HV004 CORR02 0.12345 +0.54321”,

which means that the HV-series device with serial number 004 is changed, specially channel number 2 in this case.

The span correction comes first (0.12345), then the offset correction (+0.54321). These both numbers represent the correction parameters. The span correction ranges from 0.00000 to 1.99999 (always 5 digits after the decimal point), and the offset correction ranges from -0.49999 up to +0.49999. For the offset the sign “-” or “+” always has to be sent as well. The decimal point always must be a point and not a comma (“.” and not “,”).

Set All Channels Command (Option)

This command sets all channels simultaneously (within 300us). Devices with fast settling time and communication can be accessed much faster (e.g. with 1Mbaud/s communication and 8 channels the total response time is 730us. This time is without the USB frame delay and other pc related overhead. To minimize any external overhead a direct access serial option is needed). Due to need to set the channels as fast as possible it is not possible to scale the voltage inside the device. The user must take care of this. A software example and the necessary calibration parameter (Calibration File) will be provided. With this command the internal DACs are accessed directly. DO NOT set the device to voltages outside of its specified range. Otherwise the device might not behave to its specifications.

“DDDDD A N₀₃N₀₂N₀₁N₀₀N₁₃N₁₂N₁₁N₁₀...”

-DDDDD represents the normal device identifier, e.g. “HV203”

-A tells the device set all channels.

-N_{Channel Nibble} is a nibble (4 bits) of a 16 bit word as a hexadecimal ASCII character. (0-9, A-F).

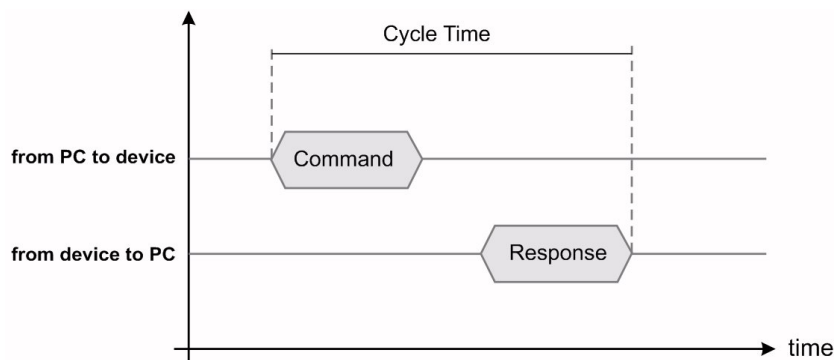
The data section of this command consists of as many blocks as the total amount of channels. Each block consists of 4 ASCII characters which represent hexadecimal values of a 16 bit word. The first character of a data block is the most significant nibble (4 bits) of the word and the last character the least significant nibble. The first block represents the first channel. Always send as many blocks as the number of channels of the device. These 16 bit words are written directly to the internal DACs.

Example of an eight channel device (Voltages for all channels are set near 0V):

“HV203 A 7FFF7FFF7FFF7FFF7FFF7FFF7FFF7FFF”

Communication Speed

The device is shipped with a transmission speed of 9600 Baud (9600 raw-Bits per second) as default value, or with a customized transmission speed as an option. In the latter case this customized speed is noted on the rear side of the device. The ‘cycle time’ for commands (as illustrated in the sketch below, time period from start of any command sent to device until end of its answer) is about 35ms to 40ms for 9600 Baud and scales up/down if a slower/faster speed is selected.



In order to avoid jamming of the data flow it is recommended to wait for each command to be answered by a response (full cycle time, as indicated above) and not sending data *before* the response of the previous command has been completed.

Note that if the protocol mode of the front display of the device is used, a screen contents may need up to 500ms to be updated. In case of frequently sent commands, this can result in some commands to be 'swallowed' and not being displayed correctly. Regular device operation, however, is not affected, it is only a display flaw.

Ramping Option

In order to provide a simple possibility to perform a 'ramping' of all output voltages, the device may be equipped with access to the internal voltage reference. All output voltages scale in general proportionally to the internal +5V reference. One can switch an external +5V source to the respective input and the latter voltage is used to scale all output voltages instead. E.g. applying 0V here brings all output voltages to zero, or, for instance applying 2.5V brings them to half the value programmed by the PC. Note that *all* voltages at the output terminals scale with the given reference. Depending on device version the reference source (internal or external) is chosen by a manual switch or by a logic level.

Applying e.g. a linear voltage ramp between 0V and 5V to the external reference input will cause all output voltages to perform ramps individually from zero to the set value, in case the selector switch is in the "ext."-position.



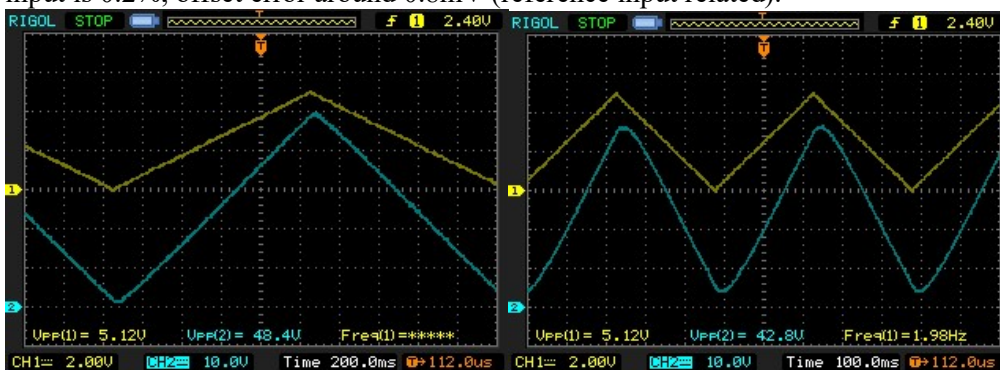
Note that adding an offset (floating ground option) is prohibited, unless the special option of floating ramping input is provided.

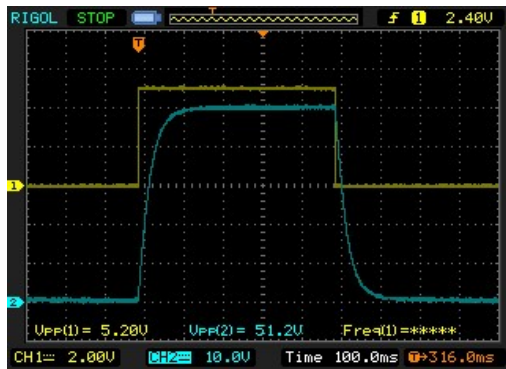
In the latter case the manual switch is replaced by a BNC input (CMOS/TTL level) for ramping activation.

left figure:

Devices feature a reference input on the front or rear plate and a manual reference selector knob to choose between internal and external reference.

The subsequent graphs depict the response of a channel of a HV series device (lower trace) to changing voltages at the reference input (upper trace). Please note that the ramping frequency was varied in order to make speed limits better visible. The last graph depicts the response on a rectangular change of reference voltage. The typical scaling error on use of the external reference input is 0.2%, offset error around 0.8mV (reference input related).





User Manual Version Revision History:

- 1 Description of preliminary version
- 2.0 Addition of quad devices, corrections in specifications
- 2.1 Addition of steerer devices, corrections and extension of specifications
- 2.2 Addition of 1kV- devices, corrections in specifications
- 2.3 Output switches are obsolete, description is removed, corrections in specifications
- 2.4 HV 200-2 specifications added
- 2.5 Output current rating changed
- 2.6 HV 400 model version added, slight corrections in specifications
- 2.61 Fuse ratings changed, max. admissible B-field changed
- 2.62 HV 50 model version added
- 2.63 Capacitive load behaviour added.
- 2.64 Floating GND specifications changed.
- 2.70 Extended ASCII Command syntax added
- 2.71 Display behaviour in protocol mode updated.
- 2.72 Floating GND specifications changed.
- 2.8 HV 2000 specs added, corrections in section 4.4 and specifications table
- 2.81 Corrections in sections 4.2, 4.2, 4.3 and 7 added
- 2.82 Analog input specifications in section 7 added
- 2.83 Ramping Option description and specifications added
- 2.84 Remark about read-back of voltages and currents added
- 2.85 Data of 1hour- and 24h-variations added
- 3.0 Additions in the description of command syntax in Appendix, changes in section 4 regarding description of output stability
- 3.1 Addition of the HV 40 specifications
- 3.2 Description of software with different COM port speed settings.
- 3.21 Additions in the notes section for current and voltage readback; alterations in section 4.3
- 3.22 Corrections in HV 50 specifications
- 3.23 Steerer description added
- 3.24 Additions in the section regarding ramping function
- 3.3 Update of specifications
- 3.4 Option of 115V/230V switch added, description of Lemo monitoring outputs added
- 3.41 Update of Mains Supply specifications
- 3.42 Update of EMC compliance
- 3.43 Addition of 'Set All Channels Command'
- 3.44, 3.45 Modification of declaration of conformity and overvoltage class, minor additions in specifications table
- 3.46 Correction of limits for max. admissible output currents. Overheating warning hints modified
- 3.47 Hints about overtemperature handling added; hint about response time of 'CORR' command added, details of protocol mode changed; bit order of Lock-command readback changed; definition of TEMP command altered (two sensors and not only one, in some devices)
- 3.48 Steerer-information abandoned, specifications of +/-100V version altered, analog input option abandoned.
- 3.49 Hints about extended command set added, hints for USB drivers altered
- 3.50 HV 110-16p and HV 75-1p device version added, RS-485 interface hint added, Front page modified
- 3.51 Grammar issues fixed, HV 75 details added
- 3.52 Hi Current Version HV100-4 added
- 3.53 Current readback option and specs added
- 3.54 Specs of analog readback feature added

Information in this manual may be changed without further notice

KONFORMITÄTSERKLÄRUNG

Hersteller: Stahl-Electronics
Herstelleradresse: Kellerweg 23
67582 Mettenheim
Deutschland

Wir bescheinigen, dass das Produkt

Produktname: HV series voltage supply
Beschreibung: Präzisions-Mehrkanalspannungsquelle
mit bis zu 16 Kanälen
Modelnummern: HV 40, HV 50, HV 75, HV 100, HV110, HV 150, HV 200,
HV 400, HV 450 HV 500, HV 1000
Produktoptionen: betrifft alle verfügbaren Produktoptionen

mit den Bestimmungen des Rates der Europäischen Union, hinsichtlich der Direktive

2006/95/EC

übereinstimmt.

Ausstellungsdatum
21. Dezember 2014

Inhaber (Bevollmächtigter)

DECLARATION OF CONFORMITY

Manufacturer's Name: Stahl-Electronics
Manufacturer's Address: Kellerweg 23
67582 Mettenheim
Germany

We declare, that the product

Product Name: HV series voltage supply
Description: Multichannel Precision Voltage Source
Model Number: HV40, HV50, HV75, HV 100, HV 110, HV 150, HV 200,
HV 400, HV 450 HV 500, HV 1000
Product Options: This declaration covers all options of the above product(s)

complies with the European Union provisions with respect to
directive

2006/95/EC

and carries the CE Marking accordingly

Date Of Issue

21. Dezember 2014

signed by CEO